

**fSorb®**

**1/2"**

(844) 313-7672  
fsorb.com • info@fsorb.com



## APPLICATIONS AND USAGE

The 1/2" is ideal for creating custom shapes, cutouts, and unique architectural forms. It has a great tackable surface and is a lower cost solution than fabric wrapped panels. Works well with spaces requiring minor acoustic correction such as:

- Offices
- Universities
- Retail spaces

## PANEL SPECIFICATIONS

|           |                     |
|-----------|---------------------|
| Thickness | 1/2"                |
| NRC       | 0.50 (Type A mount) |
| Size      | 48" x 96"           |

Can be cut to fit onsite or ordered in custom sizes.

## SOURCING OF RAW MATERIALS

The recycled polyester comes from PET plastic fibers which are sourced from a variety of locations near the manufacturer and vary depending on availability.

|                     |             |
|---------------------|-------------|
| Material Name       | Polyester   |
| CAS Number          | #68604-67-1 |
| Proportion          | 100%        |
| Contains 0.0% VOC's |             |

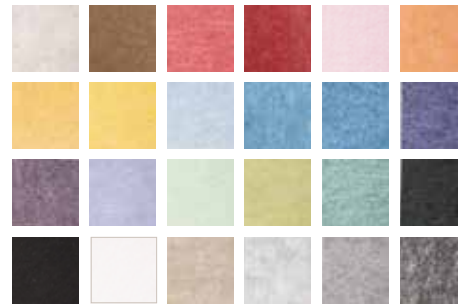
## PUBLICLY DISCLOSED HEALTH PRODUCT DECLARATION

FSorb® has a Red List Free - Declare® Label to support HPD's for LEED and Living Building Challenge projects.

They are located on the product section of the website or provided upon request.



## AVAILABLE COLORS



Light Beige, Chestnut, Red, Rose Red, Pink, Orange, Apricot, Yellow, Sky Blue, True Blue, Ocean Blue, Midnight Blue, Dark Purple, Purple, Seafoam Green, Moss Green, Green, Dark Green, Black, White, Tan, Light Grey, Grey, and Charcoal

Typically stocked inventory within U.S., often ships in 3-5 business days.

## RECYCLED CONTENT

The recycled content varies depending on the availability of recycled PET fibers. Recycled content is typically 65% depending on product, color and location of manufacturing.

## OTHER ECOLOGICAL INFORMATION

FSorb® does not contain any ozone depleting chemicals and is not classified as a hazardous air pollutant.

## FREE FROM HARMFUL PAINTS, COATINGS, ADHESIVES AND SEALANTS

No paints, coatings, adhesives or sealants are used to manufacture FSorb®. It is thermally bonded.

## MANUFACTURING LOCATION

FSorb® is manufactured and shaped in Redmond, Washington. Raw materials are sourced within the United States and South Korea. FSorb® is distributed through a series of distribution yards throughout North America.

## LIMITED THREE-YEAR WARRANTY

FSorb® has a limited Three-Year Warranty. This warranty covers defects in the structural integrity of the panels. This warranty does not cover damage caused by fire, water, accident, or by any form of abuse.

## CLEANING & MAINTENANCE

Can be cleaned and maintained as follows: brush off, blow off with compressed air, clean by using a dry cleaning sponge, damp white cloth or similar. Heavy soiling or stains may require a cleaner similar to Resolve Carpet Cleaner or Spot Shot which should be used as directed. Bleach can also be used if needed. Heavily damaged panels should be replaced.

# FSorb®

# 1/2"

(844) 313-7672  
fsorb.com • info@fsorb.com